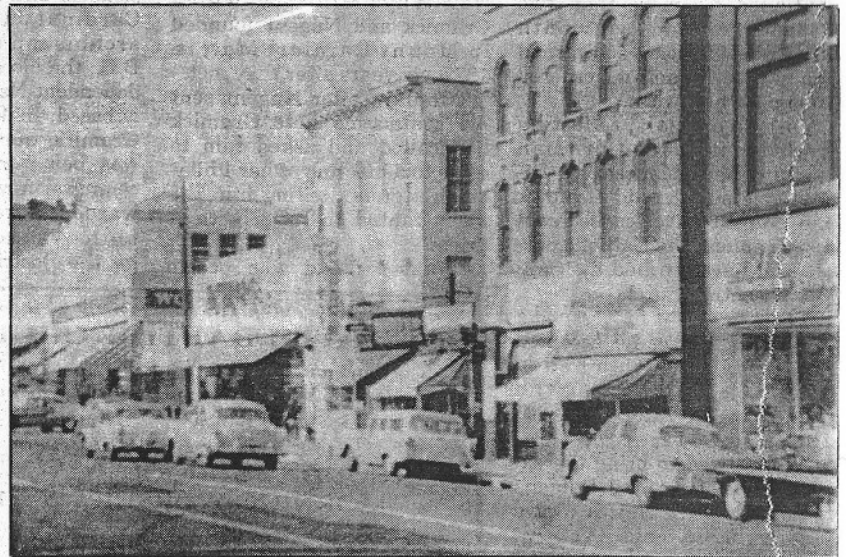
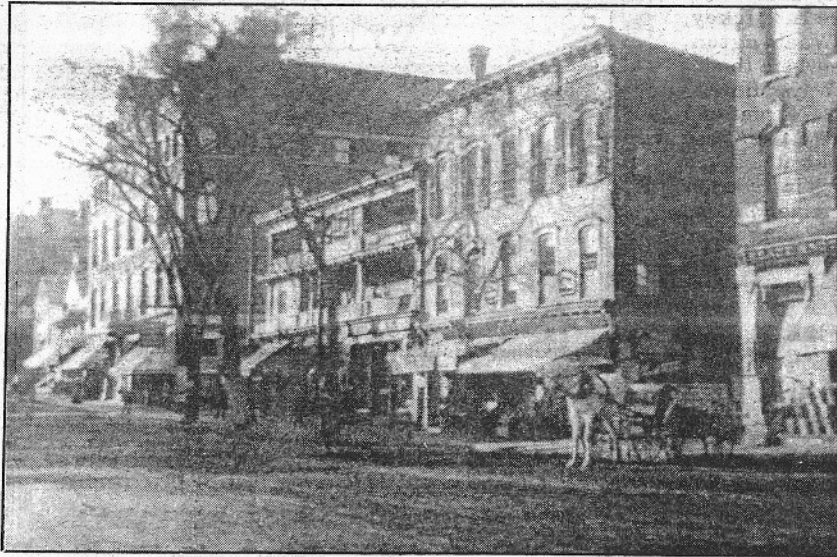


store. Adam Todd was born in Lawrence, Massachusetts in 1923, and on leaving school, worked in the Ayer woolen mills. He then embarked on a career with W.T. Grant, and managed their stores at Melrose and Danvers, Mass. He came from Burlington, Vt., in 1956 to manage W.T. Grant's Willimantic store. He arrived in Willimantic on a bus from Providence, and was surprised at the city's small size, but he soon became attached to its bustling, pre-mall, commercial Main Street.

Russell Kelley, Todd's assistant manager, had worked for 17 years in retail merchandise for W.T. Grant. Accompanying Russell to Todd's was another ex-Grant employee, Estelle Ad-

amo, the buyer of women's and children's fashions. The shoe store was managed by Charles Brock.

Todd's became a Willimantic landmark for more than a generation. Adam Todd retired in 1992, and the store closed. He is delighted that this important section of Willimantic has been renovated by QVCTC. The college is being established in a 48-year-old building on a location once occupied by a butcher's, a livery stable, a news dealer, grocery store, drugstore, and two major department stores. The addition of faculty, staff and students to downtown, and the redevelopment of Capitol Theatre and YMCA building will surely reinvigorate Main Street.



The changing face of Main Street. LEFT: The 1828 Shea block is pictured in 1902. Note the Loomer Opera House located on North Street. RIGHT: The same scene in 1956. The new Enterprise Store has replaced the Shea block, and the Woolworth's building has replaced the opera house.